

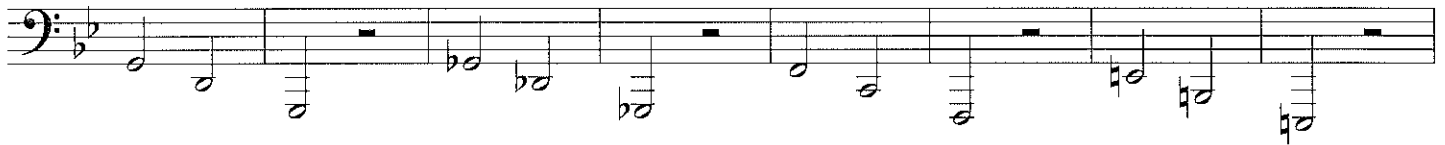
Tuba

# Lip Slurs/Chromatic

#1



7



15 #2



21



27



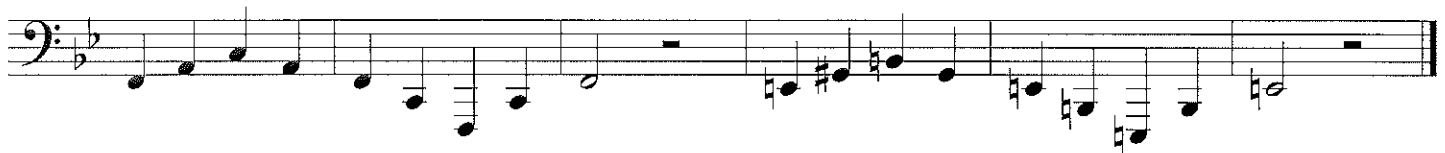
32



38



44



Tuba

# Soli/Solo Scale Pattern 1 Octave



4



7



10



13



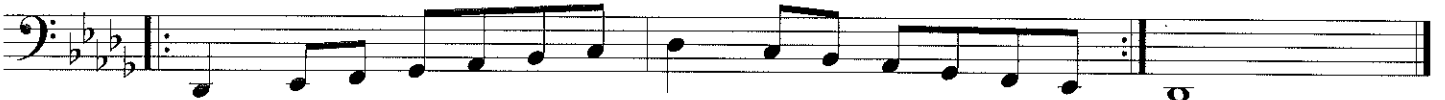
16



19



22



Tuba

Major, and Harmonic, Natural, Melodic Minors

D

M H

5

N Mel

10

M H

14

N Mel

19

M H

23

N Mel

28

M H

32

N Mel

Soli/Solo Scale Pattern 1 Octave

37 M H

41 N Mel

46 M H

50 N Mel

55 M H

59 N Mel

64 M H

68 N Mel

Tuba

commissioned by the Ball State University chapter of Phi Mu Alpha  
to honor Dr. Joseph R. Scagnoli

# Three Warm-up Chorales for Band

on reharmonized melodies from Percy Aldridge Grainger

## I. Intonation: *Harvest Hymn*

Ryan Fraley  
(ASCAP)

Slowly ( $\text{♩} = 60$ )

Musical score for 'Harvest Hymn' in bass clef, 4/4 time, key of B-flat major. The score consists of four staves of music. The first staff begins with a dynamic marking of *mp* and contains measures 1 through 5. The second staff contains measures 6 through 9. The third staff contains measures 10 through 13. The fourth staff contains measures 14 through 17. The melody is characterized by long, sweeping lines with many ties, indicating a slow, sustained performance.

## II. Balance: *Horkstow Grange*

Slowly ( $\text{♩} = 60$ )

Musical score for 'Horkstow Grange' in bass clef, 4/4 time, key of B-flat major. The score consists of four staves of music. The first staff begins with a dynamic marking of *mf* and contains measures 1 through 4. The second staff contains measures 5 through 8. The third staff contains measures 9 through 11. The fourth staff contains measures 12 through 16. The melody is more rhythmic and active than the first piece, featuring eighth and quarter notes.

### III. Expression: Irish Tune

Expressively ( $\text{♩} = 60$ )

Musical score for Tuba, titled "III. Expression: Irish Tune". The score is written in bass clef with a key signature of two flats (B-flat and E-flat). The tempo is marked "Expressively" with a quarter note equal to 60 beats per minute ( $\text{♩} = 60$ ). The score consists of 35 measures, divided into 10 systems of four measures each. The first system (measures 1-4) starts in 4/4 time and includes a dynamic marking of *mp*. The second system (measures 5-8) includes a triplet of eighth notes in measure 7. The third system (measures 9-13) includes a dynamic marking of *mf* in measure 10 and a crescendo leading to *f* in measure 13. The fourth system (measures 14-17) includes a dynamic marking of *mp* in measure 16 and a decrescendo. The fifth system (measures 18-24) includes a 5-measure rest in measure 20. The sixth system (measures 25-28) includes a dynamic marking of *mf* in measure 26 and a crescendo leading to *f* in measure 28. The seventh system (measures 29-32) includes a decrescendo. The eighth system (measures 33-35) includes a dynamic marking of *p* in measure 34 and a dynamic marking of *mp* in measure 35. The score concludes with a fermata over the final note in measure 35.

# ILMEA Senior HS Band Audition Scales <sup>Rev 7/2011</sup>

Tuba

The image displays 12 musical staves, each representing a scale for the tuba. The scales are arranged in descending order of key signature, starting with one flat (B-flat major) and ending with one sharp (F# major). Each staff begins with a bass clef, a 4/4 time signature, and a key signature signature. The scales consist of eighth and sixteenth notes, with some staves including triplets. The final staff concludes with a double bar line and repeat dots.

- Staff 1: B-flat major (one flat)
- Staff 2: B major (two flats)
- Staff 3: B minor (two flats)
- Staff 4: B-flat minor (three flats)
- Staff 5: B major (two flats)
- Staff 6: B minor (two flats)
- Staff 7: B-flat major (one flat)
- Staff 8: B major (two flats)
- Staff 9: B minor (two flats)
- Staff 10: B-flat major (one flat)
- Staff 11: B major (two flats)
- Staff 12: B minor (two flats)